

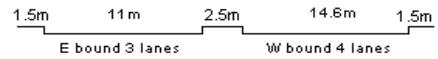
YEAR 2014

CORE STATION 5025

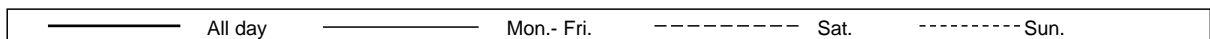
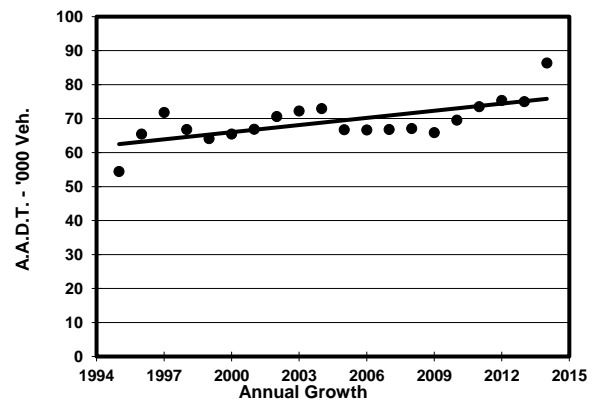
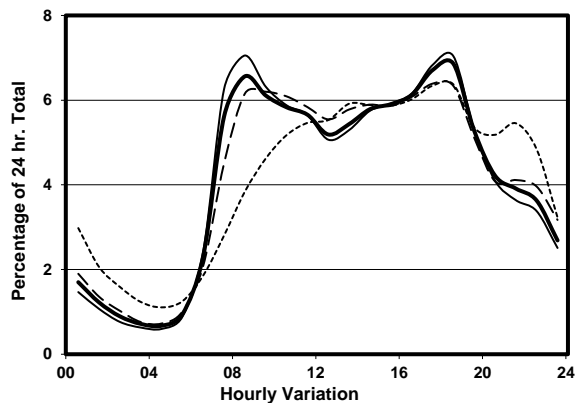
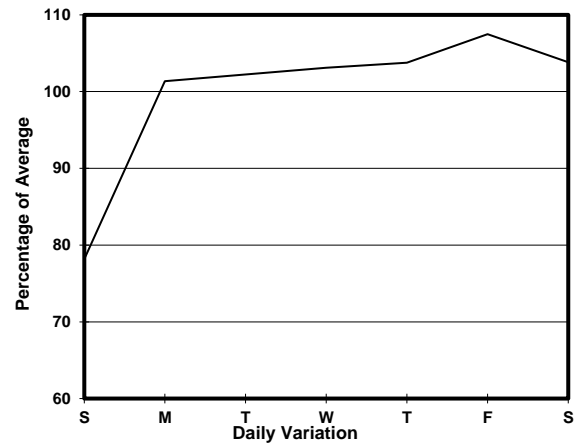
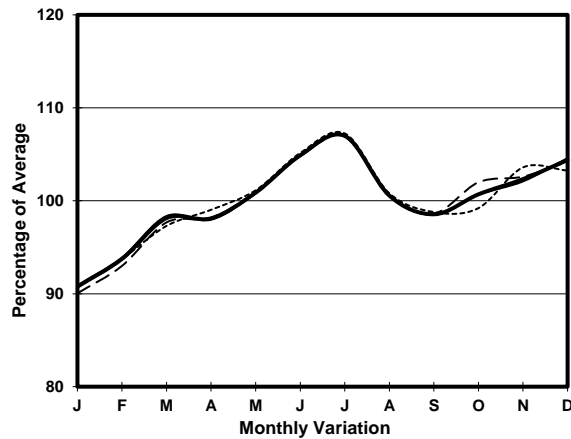
ROAD NETWORK MAJOR

ROAD TYPE EXPRESSWAY

LINK YUEN LONG HIGHWAY (from HUNG TIN RD INT to LAM TEI INT)



1. TRAFFIC FLOW VARIATION AND GROWTH



2. TRAFFIC CHARACTERISTICS (BY DIRECTION)

Parameter	All - Day	Mon. - Fri.	Sat.	Sun.
EAST BOUND				
A.A.D.T.	45000	46950	48150	35920
R 12 / 24 - %	71.2	72.7	70	63.1
R 16 / 24 - %	89.2	90.1	88.2	85.1
AM Peak Hour	0800-0900	0800-0900	0900-1000	0900-1000
One-way flow at AM peak hour	2920	3290	2930	1680
T - % (AM)	-	28	-	-
PM Peak Hour	1700-1800	1700-1800	1700-1800	1700-1800
One-way flow at PM peak hour	3100	3320	3120	2230
T - % (PM)	-	25.4	-	-
Prop.of commercial vehicles - 16 hr.	-	27	-	-
WEST BOUND				
A.A.D.T.	41370	43600	42770	32270
R 12 / 24 - %	72.4	73.8	71.5	64.7
R 16 / 24 - %	88.4	89.2	87.7	84.3
AM Peak Hour	0800-0900	0800-0900	0800-0900	0900-1000
One-way flow at AM peak hour	2750	3100	2760	1470
T - % (AM)	-	23.3	-	-
PM Peak Hour	1800-1900	1800-1900	1800-1900	1800-1900
One-way flow at PM peak hour	2940	3180	2750	2160
T - % (PM)	-	16.6	-	-
Prop.of commercial vehicles - 16 hr.	-	25	-	-

3. OTHER INFORMATION AND COMMENT

4. Vehicle classification and occupancy - Monday to Friday

Time		Class of vehicle									
		Motor	Private	Taxi	Private	PLB	Goods veh.		Non	Fr. Bus	
		Cycle	Car		LB		Light	M & H	Fr. Bus	SD	DD
0700-0800	Pro	2.1	34.7	12.9	1.0	3.1	19.5	20.7	4.5	0.1	1.3
	Ocp	1.0	1.5	2.0	6.4	13.7	1.5	1.1	10.5	24.9	14.4
0800-0900 Peak hour	Pro	2.3	40.5	10.2	0.7	2.0	18.8	21.0	4.0	0.1	0.5
	Ocp	1.1	1.4	2.1	5.8	14.6	1.5	1.1	17.0	30.4	28.6
0900-1000	Pro	0.8	35.3	7.7	1.0	2.2	22.9	26.4	2.8	0.2	0.7
	Ocp	1.1	1.4	2.0	3.0	12.2	1.4	1.1	15.1	21.7	21.1
1000-1100	Pro	0.9	29.2	8.3	0.5	1.4	24.9	30.0	3.6	0.3	0.8
	Ocp	1.0	1.5	1.9	2.2	12.6	1.5	1.2	19.5	23.5	20.8
1100-1200	Pro	1.4	33.0	8.8	0.9	2.1	22.4	26.8	3.5	0.3	0.8
	Ocp	1.1	1.5	1.9	1.3	11.1	1.4	1.1	12.8	28.1	22.3
1200-1300	Pro	0.5	33.7	10.4	0.8	2.0	23.2	26.0	2.0	0.4	0.9
	Ocp	1.2	1.4	2.0	6.5	9.1	1.5	1.2	18.9	18.9	21.5
1300-1400	Pro	0.8	30.6	7.0	0.6	1.6	27.2	27.4	3.8	0.4	0.7
	Ocp	1.0	1.5	2.3	4.3	12.8	1.5	1.2	11.1	17.3	22.0
1400-1500	Pro	0.4	28.3	10.0	0.6	1.5	26.1	28.8	3.0	0.4	0.8
	Ocp	1.0	1.6	2.0	1.6	14.7	1.5	1.2	12.7	21.2	29.7
1500-1600	Pro	1.1	29.5	8.3	0.7	1.4	27.2	27.9	2.6	0.3	1.0
	Ocp	1.0	1.6	2.2	3.1	12.9	1.3	1.2	18.3	20.9	24.1
1600-1700	Pro	0.9	33.0	9.7	0.9	1.4	24.2	26.3	2.3	0.3	1.0
	Ocp	1.0	1.4	2.0	3.7	13.3	1.5	1.1	21.1	32.9	26.6
1700-1800	Pro	1.6	39.9	6.8	1.2	1.6	24.1	19.4	4.1	0.3	1.0
	Ocp	1.0	1.6	2.0	2.4	15.3	1.6	1.1	18.0	26.9	31.5
1800-1900	Pro	1.3	51.3	7.1	0.5	2.4	18.9	14.4	2.9	0.3	0.9
	Ocp	1.1	1.5	2.1	3.0	15.1	1.4	1.0	13.8	32.6	31.4
1900-2000	Pro	1.4	57.0	9.6	0.5	2.4	14.8	9.1	3.8	0.3	1.0
	Ocp	1.0	1.5	1.9	1.2	13.6	1.3	1.0	13.3	25.9	18.4
2000-2100	Pro	1.0	54.3	11.7	0.2	2.7	13.7	8.4	6.1	0.3	1.5
	Ocp	1.1	1.4	2.0	1.0	12.9	1.3	1.1	8.7	17.1	12.5
2100-2200	Pro	1.1	61.7	10.0	0.0	2.5	12.4	7.1	3.8	0.2	1.3
	Ocp	1.0	1.5	1.8	0.0	14.6	1.6	1.1	12.0	23.0	16.7
2200-2300	Pro	1.7	57.4	16.4	0.3	1.2	10.9	7.7	2.6	0.3	1.7
	Ocp	1.0	1.5	2.0	1.5	13.8	1.3	1.1	6.2	12.7	8.9
16 hours	Pro	1.2	39.4	9.4	0.7	2.0	21.2	21.3	3.4	0.3	1.0
	Ocp	1.0	1.5	2.0	3.5	13.3	1.5	1.1	14.4	23.9	21.6

Legend

Pro. Proportion of vehicles in % (Sum may not add up to 100% due to figure rounding)
Ocp. Average occupancy of vehicles
M&H Medium and Heavy